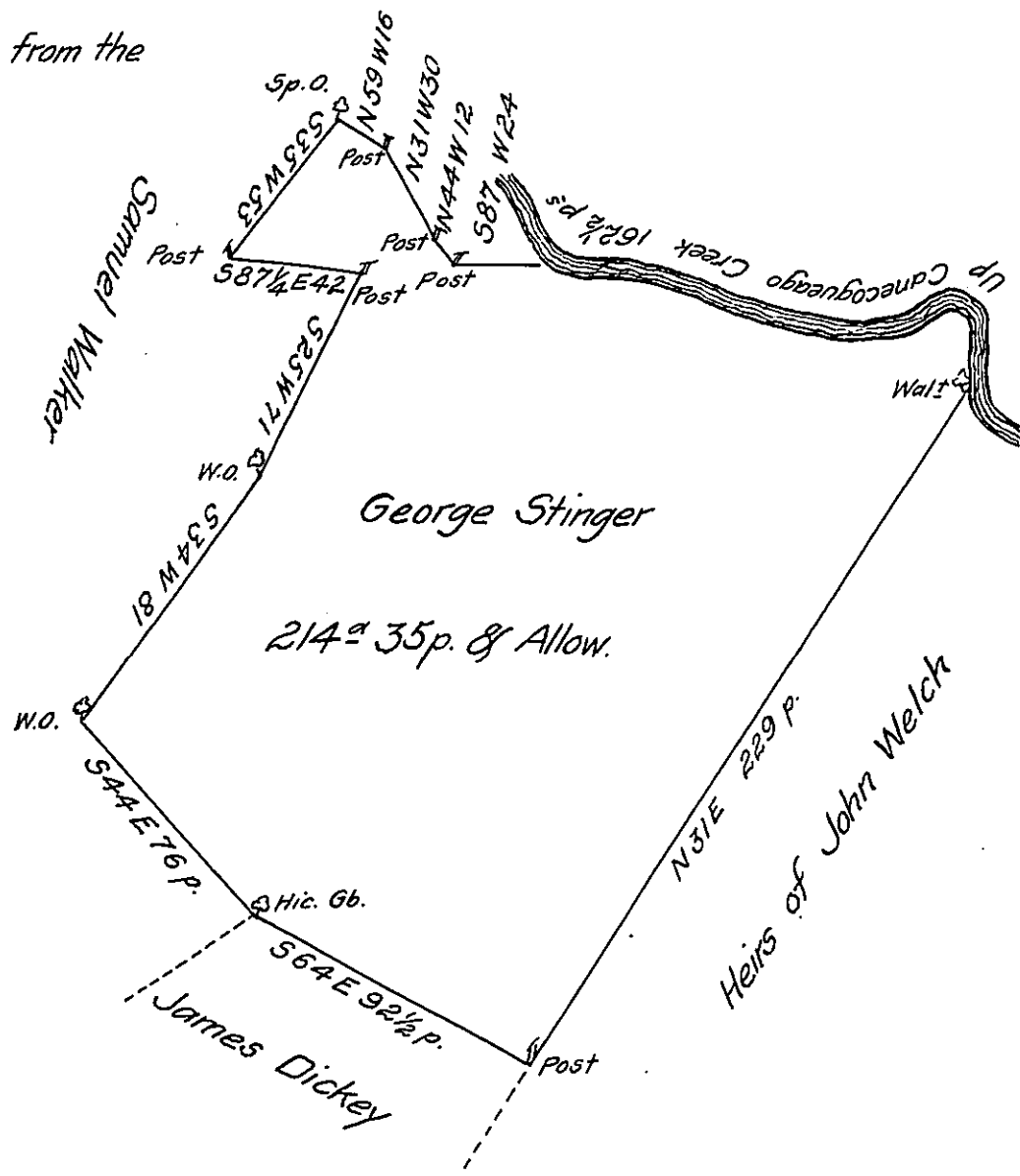


Courses on the Creek from the Walnut Corner.

- 1. N.4°W. 29½ p.
 - 2. S.54W. 25
 - 3. N.78W 82
 - 4. N.84W 26
- 162½ p.



A Draft of a Tract of Land situate in Peters Township in the County of Franklin Containing two hundred and fourteen Acres and thirty five Perches and the Allowance of Six $\frac{1}{2}$ Cent. for Roads &c^a Surveyed December 11th 1787 in pursuance of a Warrant granted to George Stinger bearing Date the first Day of September 1787.

Matt^w Henderson D.S.

To Daniel Brodhead Esquire
Surveyor General of Pennsylvania

IN TESTIMONY that the above is a copy of the original remaining on file in the Department of Internal Affairs of Pennsylvania, made conformably to an Act of Assembly approved the 16th day of February, 1833, I have hereunto set my Hand and caused the Seal of said Department to be affixed at Harrisburg, this fourteenth day of November 1906.

Jaac N. Brown
Secretary of Internal Affairs.